

## RECOGNITION CRITERIA



### Recycling

Recycled materials used at the horse show are key to reducing the consumption of raw materials and minimizing the use of landfills for discarded items. Recycling containers need to be clearly marked and available on the show grounds. Recycled materials need to be collected and processed. Bulk recycling of materials such as plastic bags for stable bedding and temporary construction supplies are also considered.



### Green Marketing

“Green” marketing, a visible commitment to the preservation of the environment, is important in demonstrating horse show organizers’ investment in sound environmental practices. In promoting these practices among spectators, competitors, sponsors and more broadly within the equestrian community, organizers foster a culture of awareness and targeted action.



### Woodlots

Maintaining trees on horse show grounds has obvious advantages for horses and people in providing natural shade and beauty. Trees provide wildlife habitat, clean the air of carbon dioxide, and fix carbon in the soil around their roots. Tree management, including basic care, replanting, and use of native species is considered.



### Grasslands

Horses are natural grazers and available grass is a plus for our equine partners. Grasslands combat erosion, are great carbon fixers, and absorb and filter water. Well-managed grasslands are essential to reducing the flow of nutrients and sediment into local water courses. Show grounds with grasslands near the competition venues and in buffer areas are considered.



### Digital Programs

Moving away from printed materials is a welcome trend; it reduces the need for paper and the cost of recycling. Providing user-friendly digital options for all entries, class lists, advertisers, and guides to the show are considered.



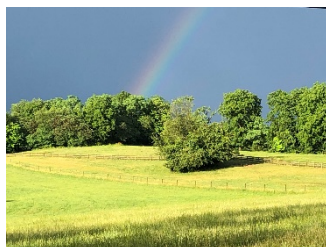
### Conservation Easements

Successful horse shows are often near population centers and major transportation routes, making them a target for residential and/or commercial development. Conservation easements are a legal tool used to preserve the land for competitions and keep community green space intact. There are a variety of options for easements available.



### Erosion Control

Any event with horses, horse transport, stabling, cars, buildings, and people will have erosion and water management challenges. Reducing the erosion issues via drainage systems, vegetation, permeable surfaces, and rehabilitation of the site after the event are considered. The environmental goal is to reduce the run-off of nutrients and sediment into local water courses.



### Open Space

Horse show grounds have extensive acreage and are a valuable asset, maintaining open space for the community. This is especially true near population centers under pressure for development. Open spaces are a natural refuge for flora and fauna between sporting events and provide protection for native species in otherwise urban or exurban areas.



### **Local Sourcing**

Locally sourcing products and services is an important element to reduce the carbon footprint of any sporting event. Transportation miles needed for providing food, décor, stable bedding, tenting, etc. are an important consideration from an environmental perspective in reducing fossil fuel use. A show of support to area businesses generates goodwill within the community and contributes to the sustainability and longevity of the horse show venue.



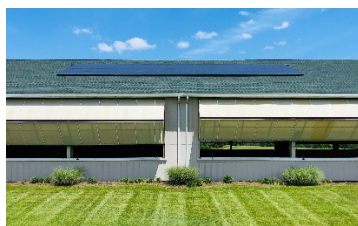
### **Composting**

All horse shows include managing 55 pounds per day of manure from each horse. This natural nutrient requires handling and composting to contribute to healthy soils. How the horse manure is managed, composted, and its final environmentally-sound use is considered.



### **Electric Vehicles**

A range of heavy machinery, runabouts, and other equipment are used to prepare horse show grounds. Incorporating electric vehicles into this mix reduces fossil fuel consumption, eliminates exhaust, and diminishes noise pollution at the site. More and more options are available for electric vehicles. This consideration will increase over the coming years.



### **Solar Panels**

Solar energy is increasingly cost-effective and widely available to provide electricity for horse shows. Large rooftop panels and smaller mobile units can save energy and replace the need for electricity generated by burning fossil fuels. This consideration will increase over the coming years.